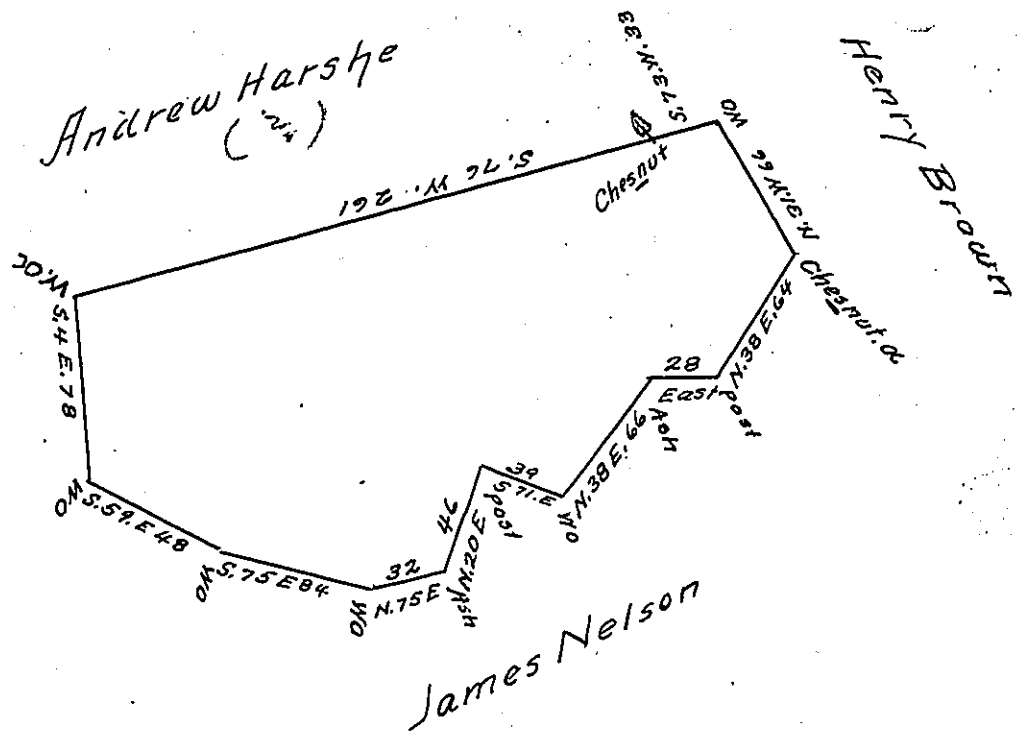


C-95-130  
(2.)

North Branch  
Big Travis

95  
Near N. Line  
Hanover -  
BEAVER



The above is a Draft of a Tract of Land surveyed by Thomas  
Storrey September 15<sup>th</sup> 1796 in pursuance of a Warrant granted  
to George M<sup>c</sup> Cullough dated March 18<sup>th</sup> 1796 Situate on the north  
branch of Big Travis Creek formerly in Washington County now  
Beaver County Containing 216 acres & 80 perches with allowance  
of 6 per Cent. March 30<sup>th</sup> 1802

James Garrothers D.S.

Samuel Cochran Esquire S.G.

IN TESTIMONY that the above is a copy of the original remaining on file in  
the Department of Internal Affairs of Pennsylvania, made  
conformably to an Act of Assembly approved the 16th day of  
February, 1833, I have hereunto set my Hand and caused  
the Seal of said Department to be affixed at Harrisburg,  
this twenty-second day of December 1905

Lucas P. Brown  
Secretary of Internal Affairs.